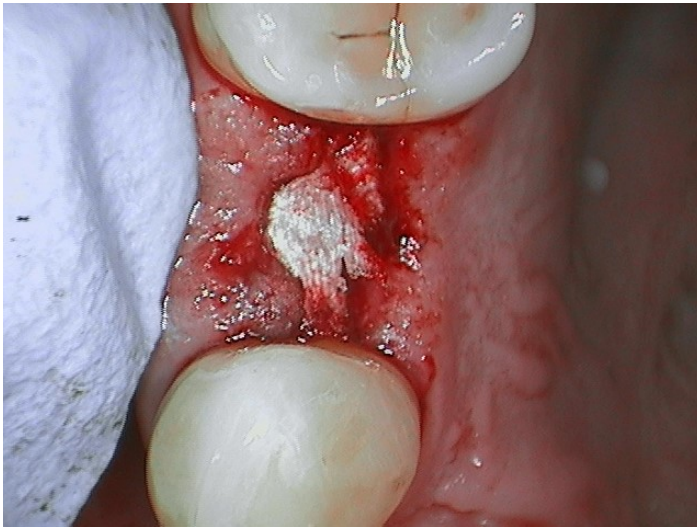


**BloodSTOP IX Hemostatic Matrix for dental usage cases**  
**-from Dr. J. Hill, Utah**

**Patient 1**

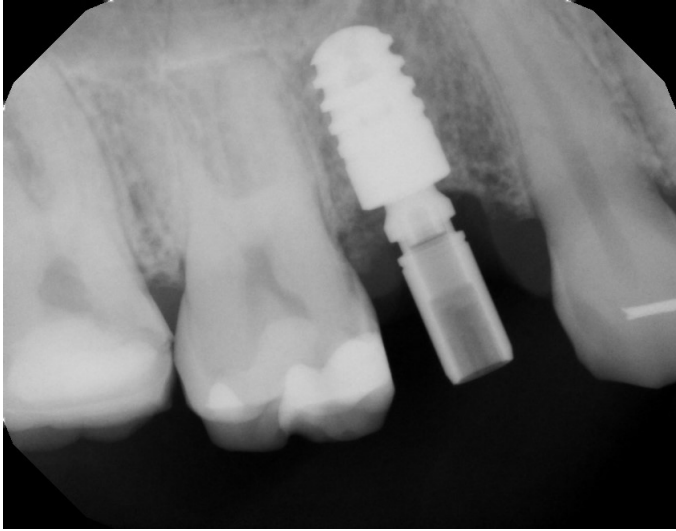


Conservative implant surgery site covered with BloodStopIX. No graft material placed. Simple incision from tooth to tooth with flaps opened to either side. BloodStop IX used to cover bone and hold tissue together, eliminating the need for any sutures.

**Patient 2**



Initial problem. Baby tooth retained into adulthood. Now failing.



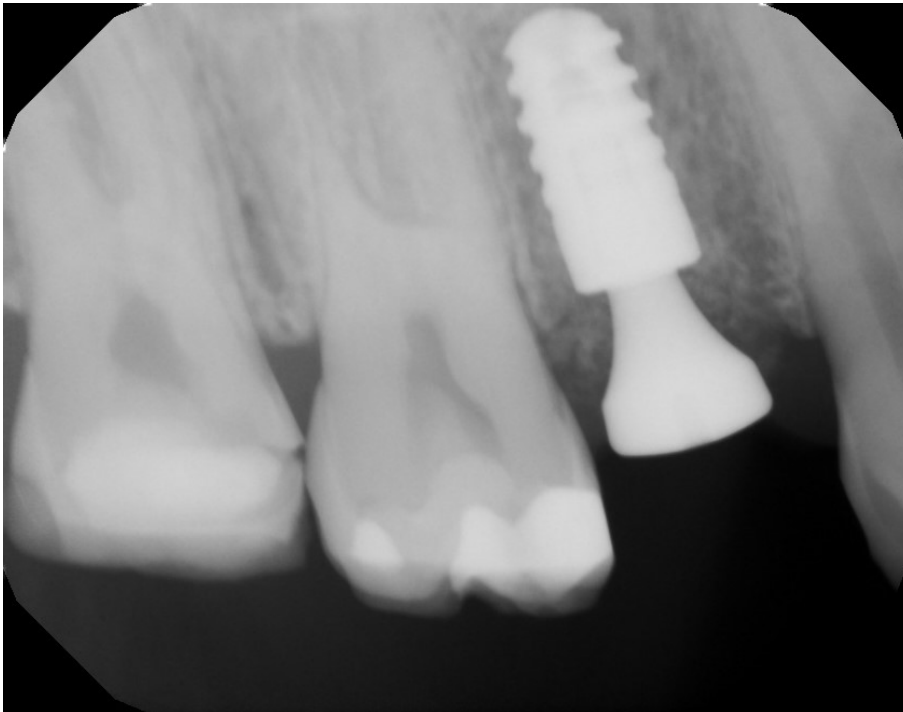
Baby tooth extracted and implant in place (with carrier assembly). Notice bone levels at top of implant ("top" meaning end of implant toward the chewing surface of the teeth, or the bottom on the x-ray).



The baby tooth left a wide defect in the soft tissue and the bone, a defect much wider than the implant at the top. The defect was filling with bone graft material and a metal "tissue former" put in place. Then "wads" of BloodStop IX were placed to fill the soft tissue gaps and hold the bone graft granules inside.

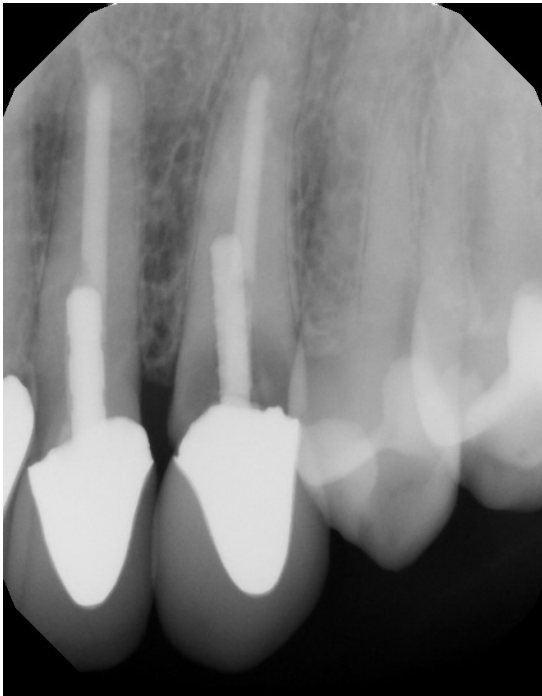


Eleven day healing check.

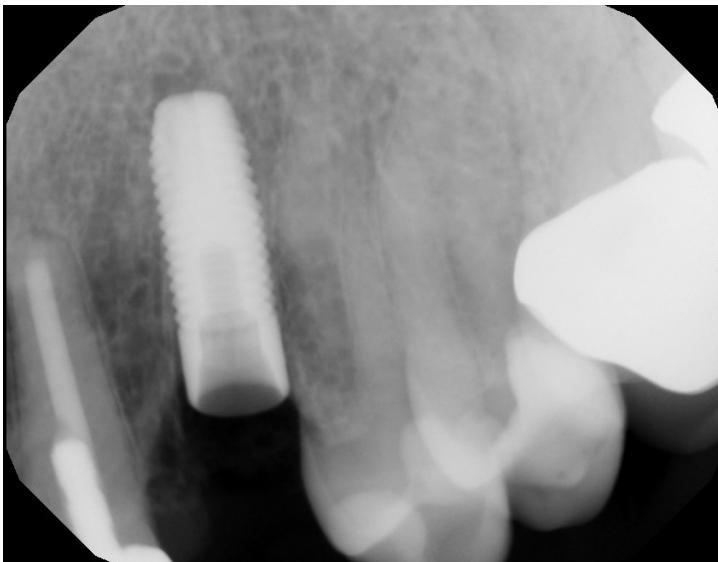


Three month healing check. Again, notice the bone levels at the top of the implant.

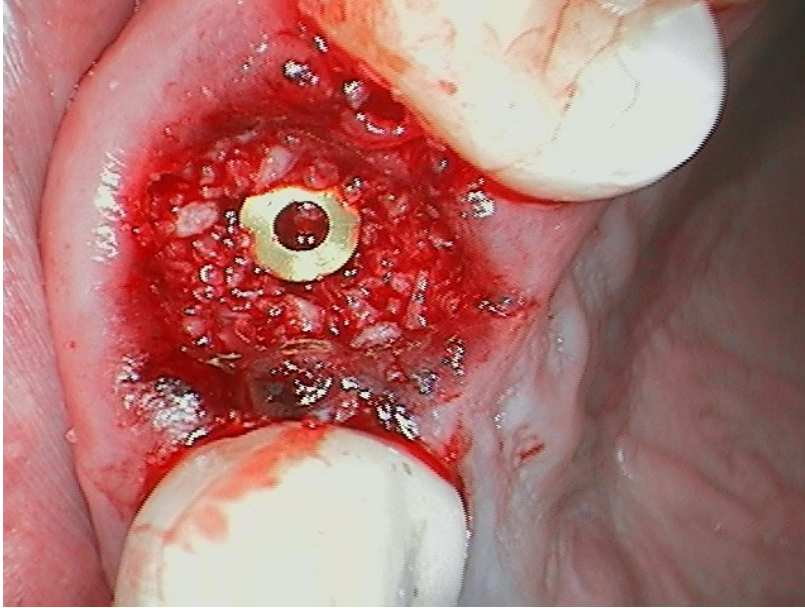
### Patient 3



Initial problem. Decay under crown of middle tooth. Decay extends below bone level, so tooth must be extracted.



On surgery day, the tooth is extracted and the implant is immediately placed.

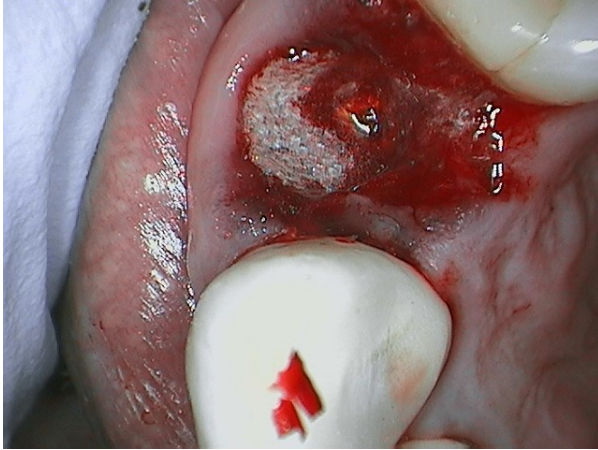


Bone graft granules are placed around the implant to fill gaps to the bone. Once again the area is shaped by the doctor like a "pie tin," flat bottom and short sides extending upward.



Double layer of BloodStop IX placed to cover site like the "pie crust."





## Patient 4



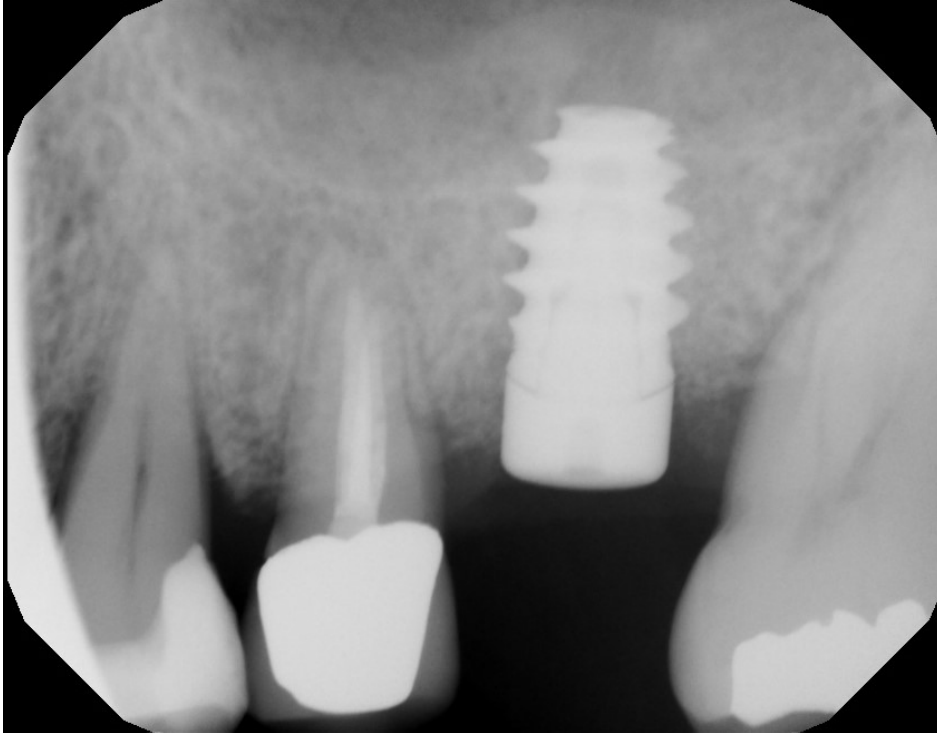
Initial problem. Tooth broken off at gumline. Infection in bone around tooth. Surgery day we extracted tooth, placed bone graft material and covered it with BloodStop IX with my pie crust technique. Sorry. We have no photo of Surgery day result.



But this photo is the 14 day healing check.

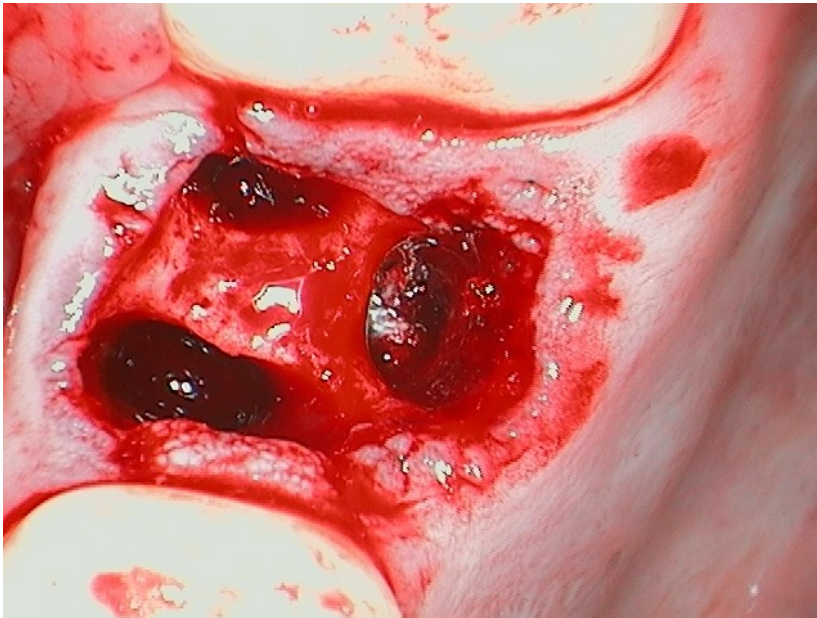


4.5 month bone healing check



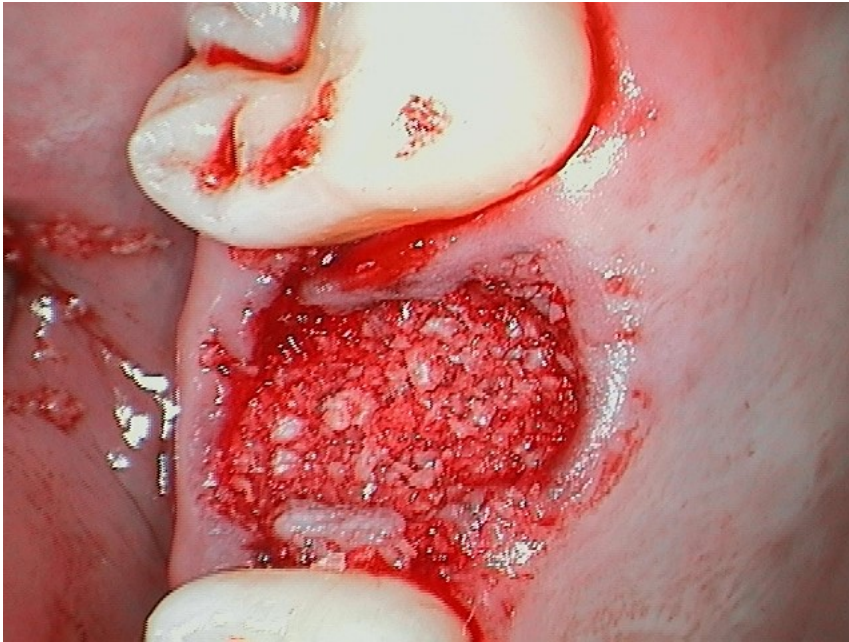
Implant Placement

## Patient 5

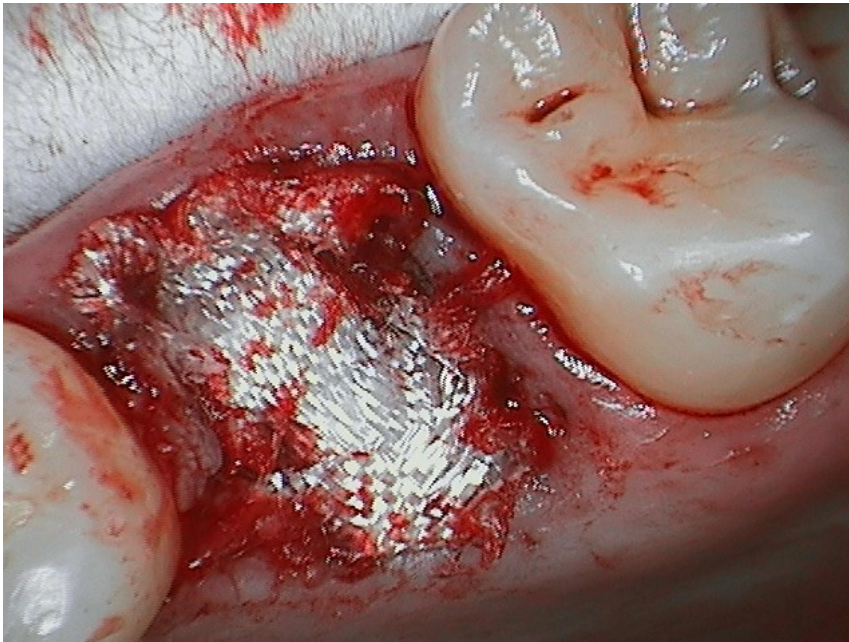


Extraction site. Two maxillary sinus communications. BloodStop IX in right side hole at bottom to create barrier to maxillary sinus.





Bone graft material filling extraction site. Creates "pie tin" shape to work with.



Double layer of BloodStop IX placed to cover site in "pie crust" fashion.



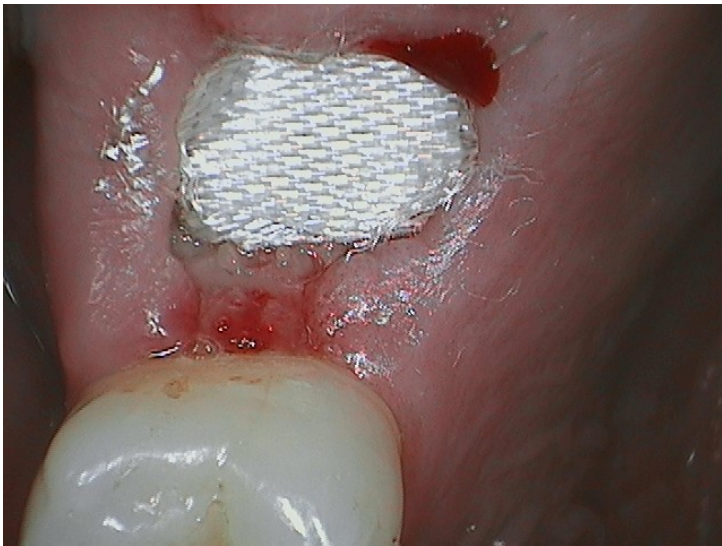
Same site after wetting with water.



Five day healing. Cover did not hold. Graft failed. But Sinus communication still closed.



Wads put in each root hole and new pie crust cover placed.



Another view. Same covering layers now wet with water.